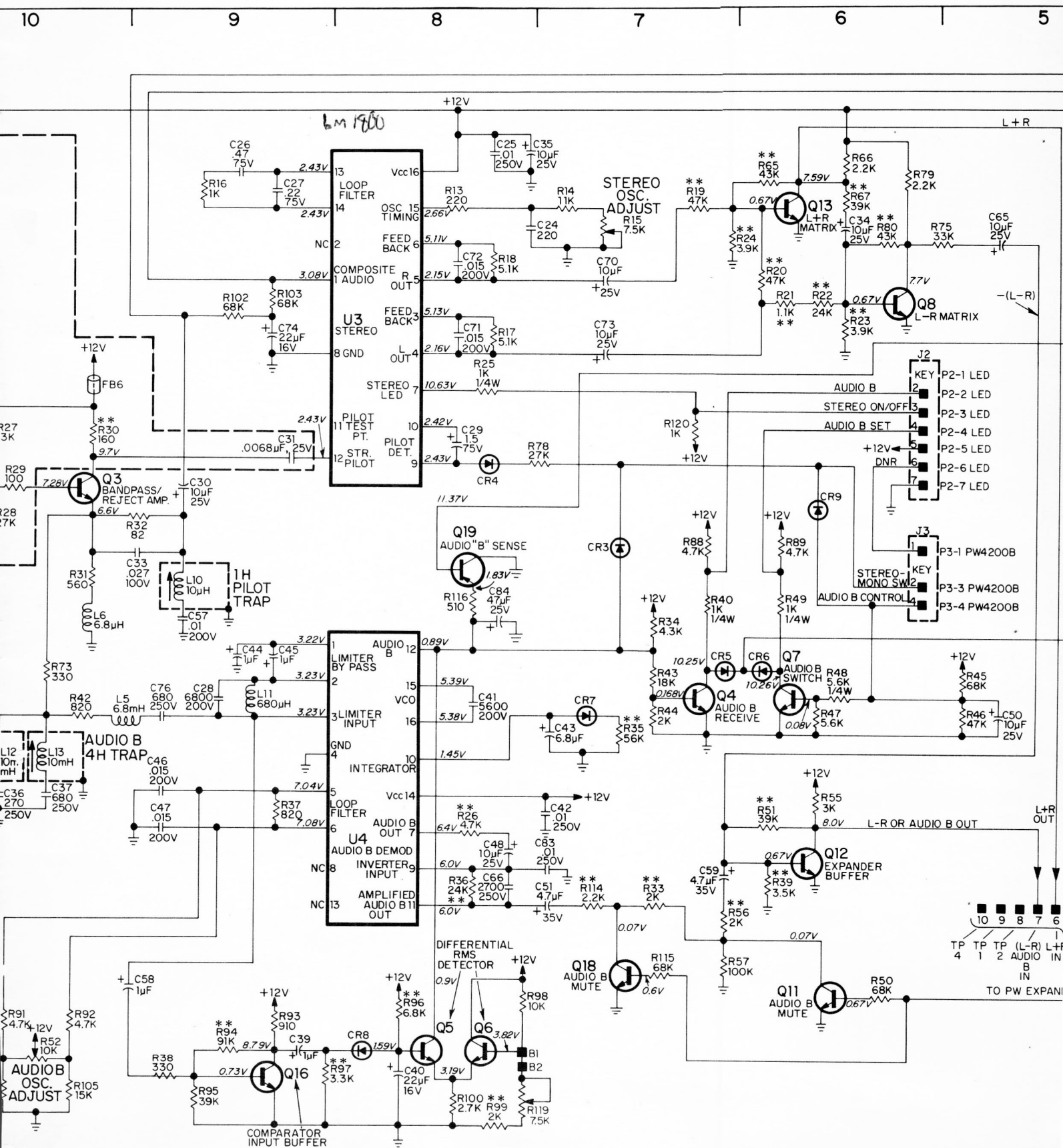
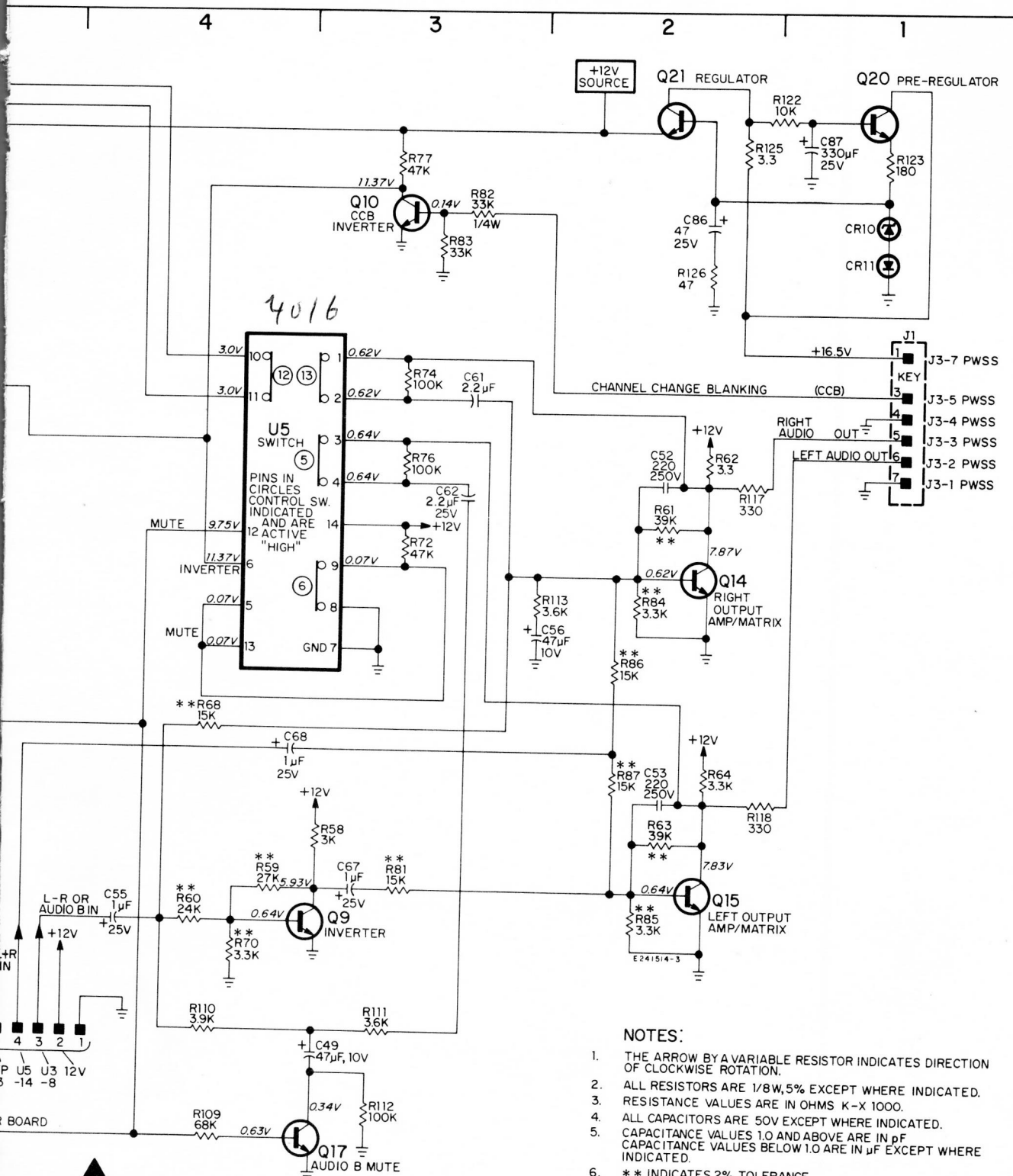


## PWSB001 STEREO BROADCAST SCHEMATIC

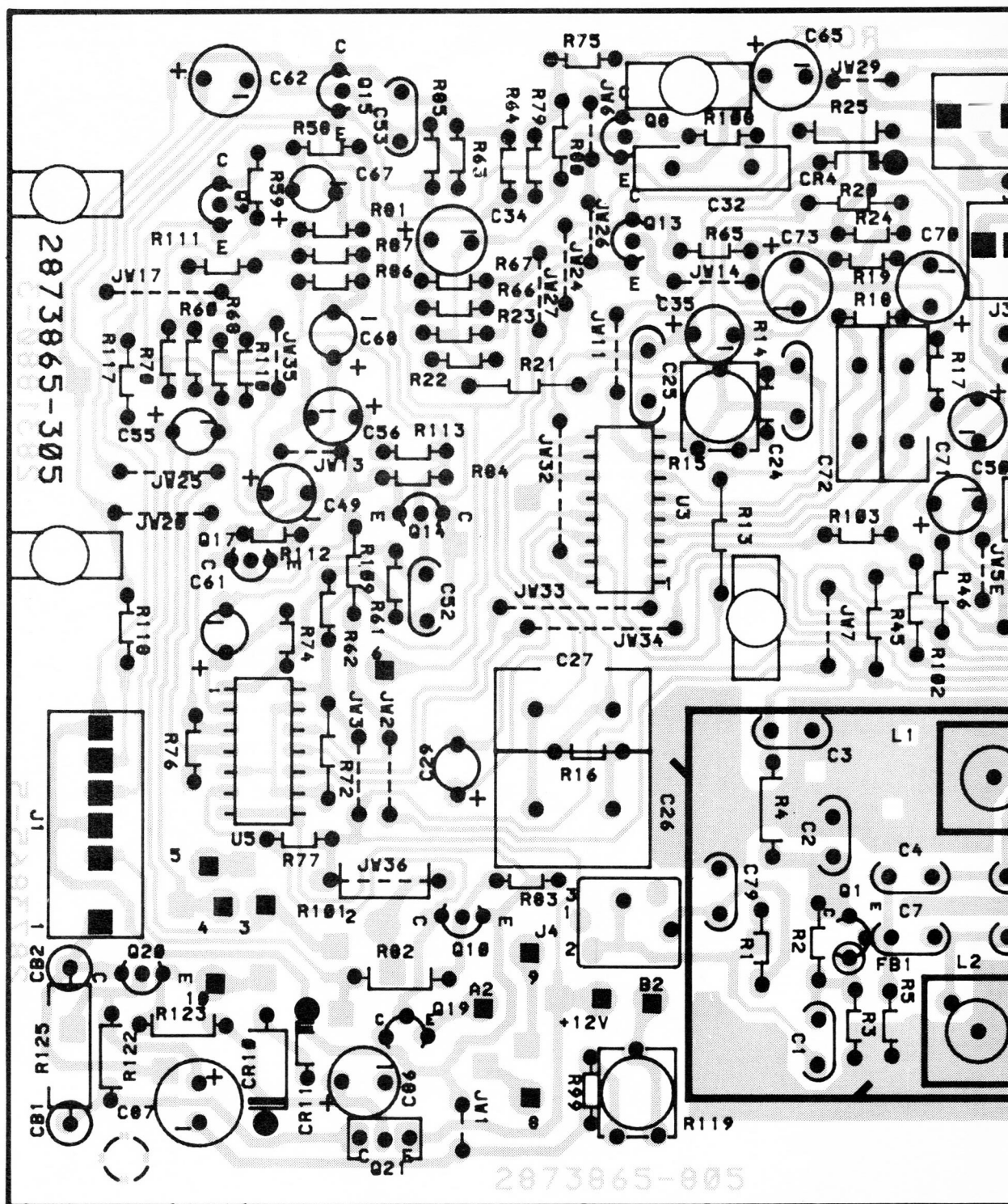




## NOTES:

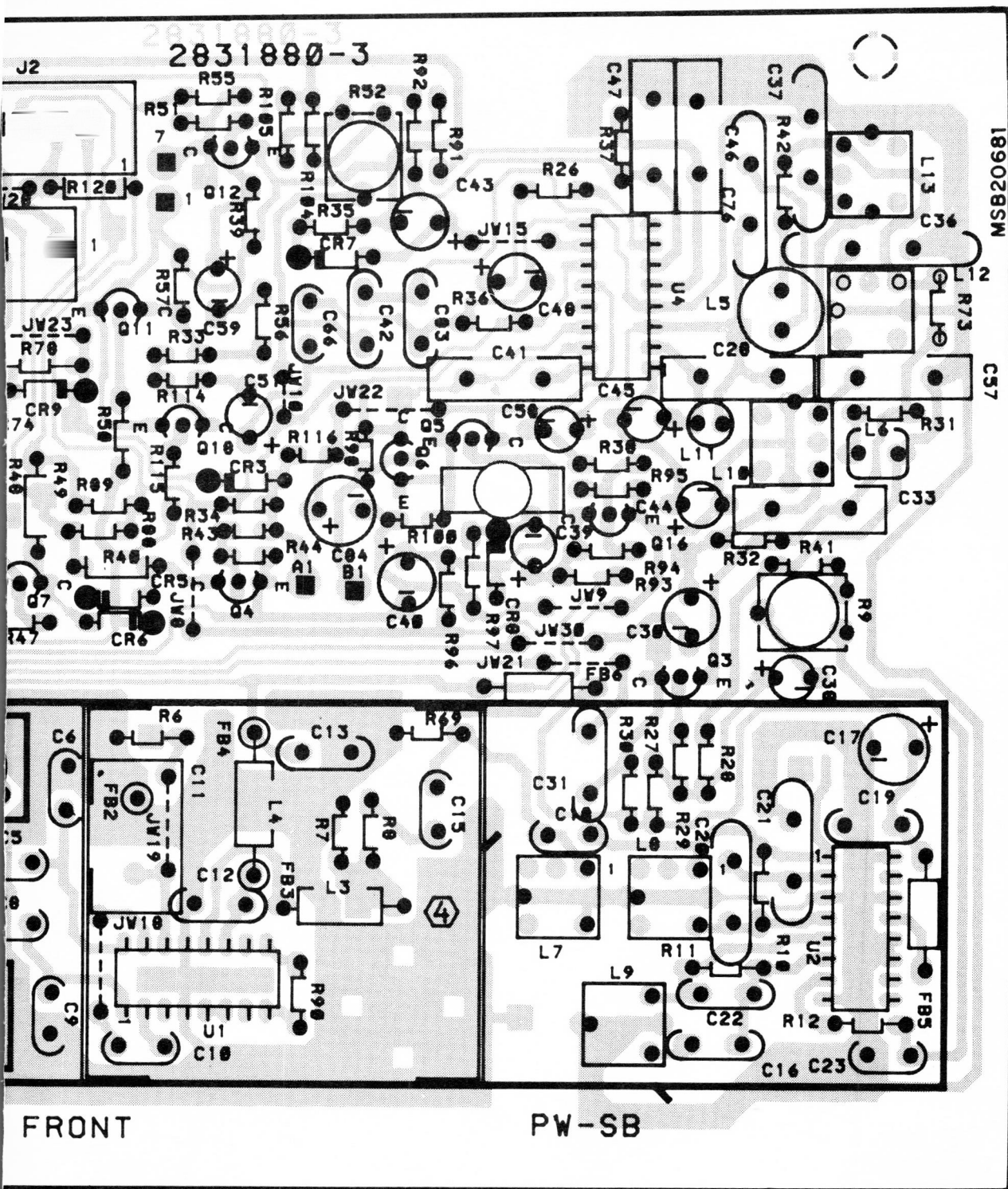
1. THE ARROW BY A VARIABLE RESISTOR INDICATES DIRECTION OF CLOCKWISE ROTATION.
2. ALL RESISTORS ARE 1/8W, 5% EXCEPT WHERE INDICATED.
3. RESISTANCE VALUES ARE IN OHMS K-X 1000.
4. ALL CAPACITORS ARE 50V EXCEPT WHERE INDICATED.
5. CAPACITANCE VALUES 1.0 AND ABOVE ARE IN pF. CAPACITANCE VALUES BELOW 1.0 ARE IN μF EXCEPT WHERE INDICATED.
6. \*\* INDICATES 2% TOLERANCE.
7. ■ INDICATES WIRE WRAP STAKE.
8. FOR INTERCONNECTION BETWEEN THIS ASSEMBLY AND OTHERS, SEE INTERCONNECT WIRING DIAGRAM IN RELATED SUPPLEMENT.

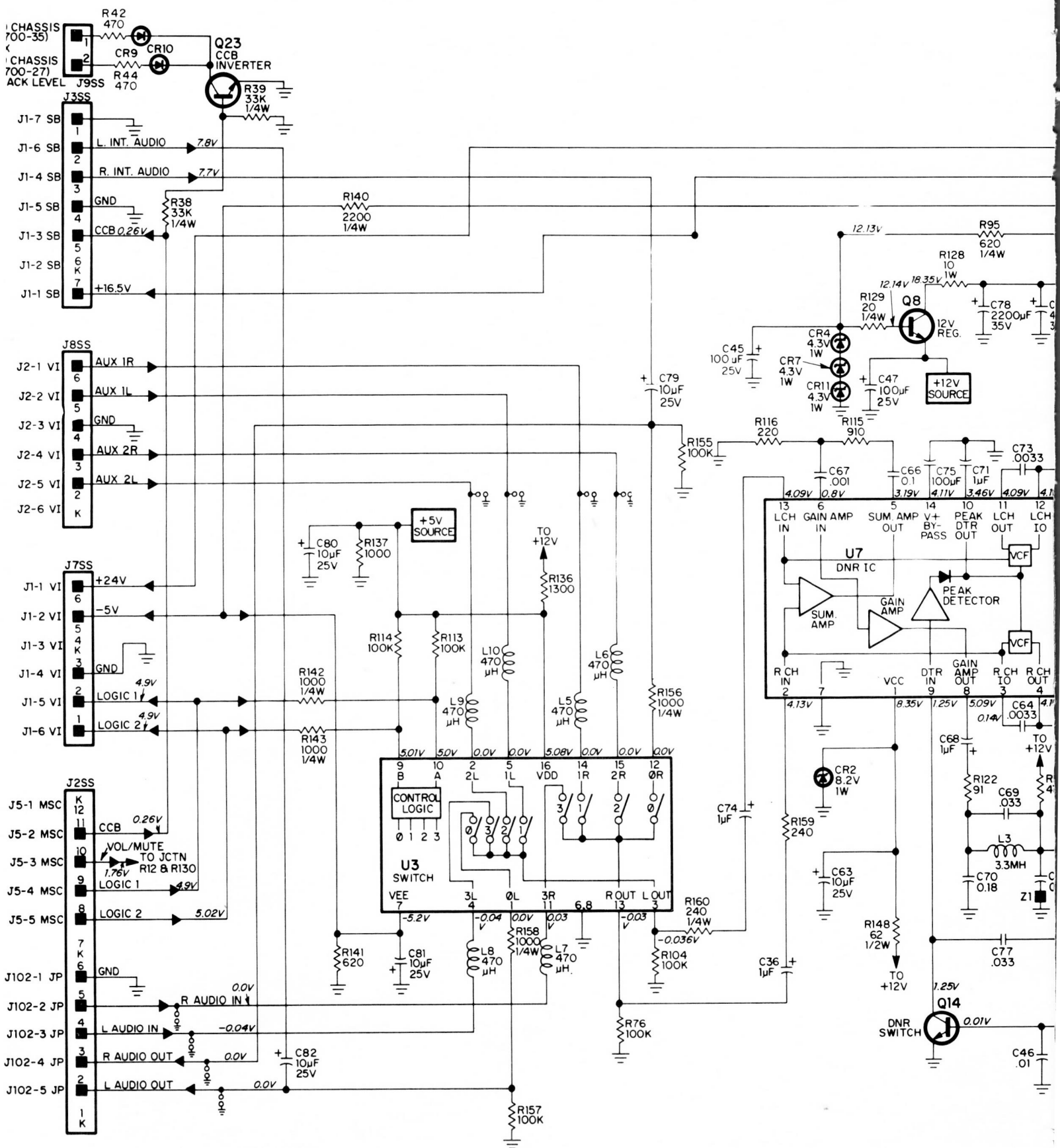
All integrated circuits and many other semiconductors are electrostatically sensitive and therefore require the special handling techniques described under "Electrostatically Sensitive (ES) Devices" in the *Servicing Precautions* section of this service data.



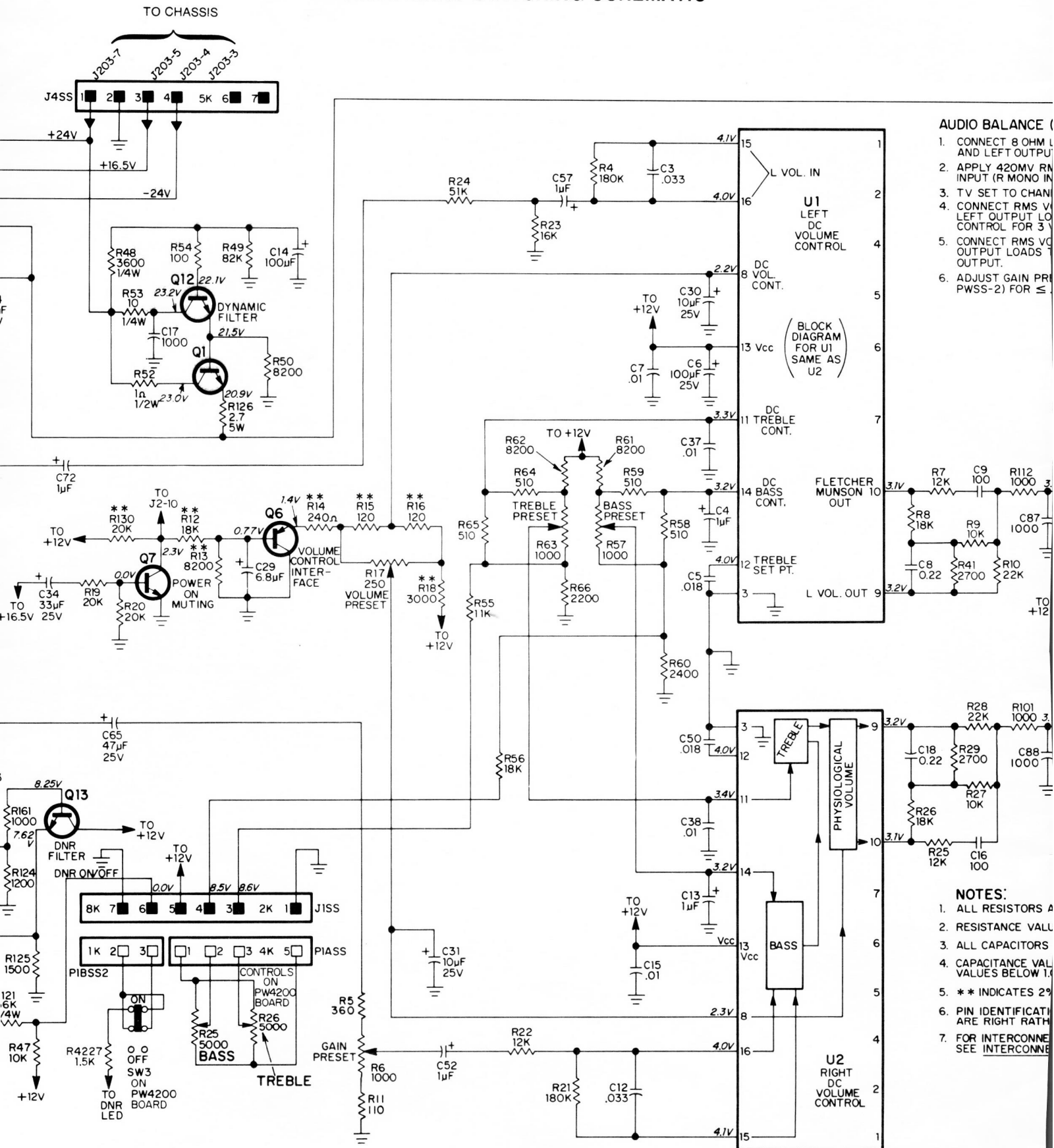


## DCAST CIRCUIT BOARD

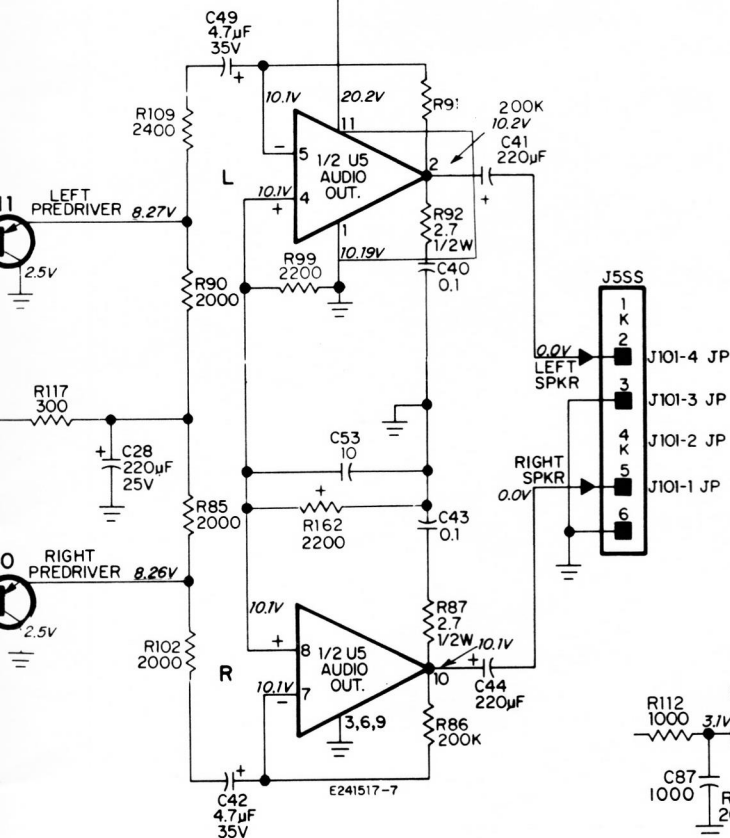




## PWSS002 AUDIO SWITCHING SCHEMATIC

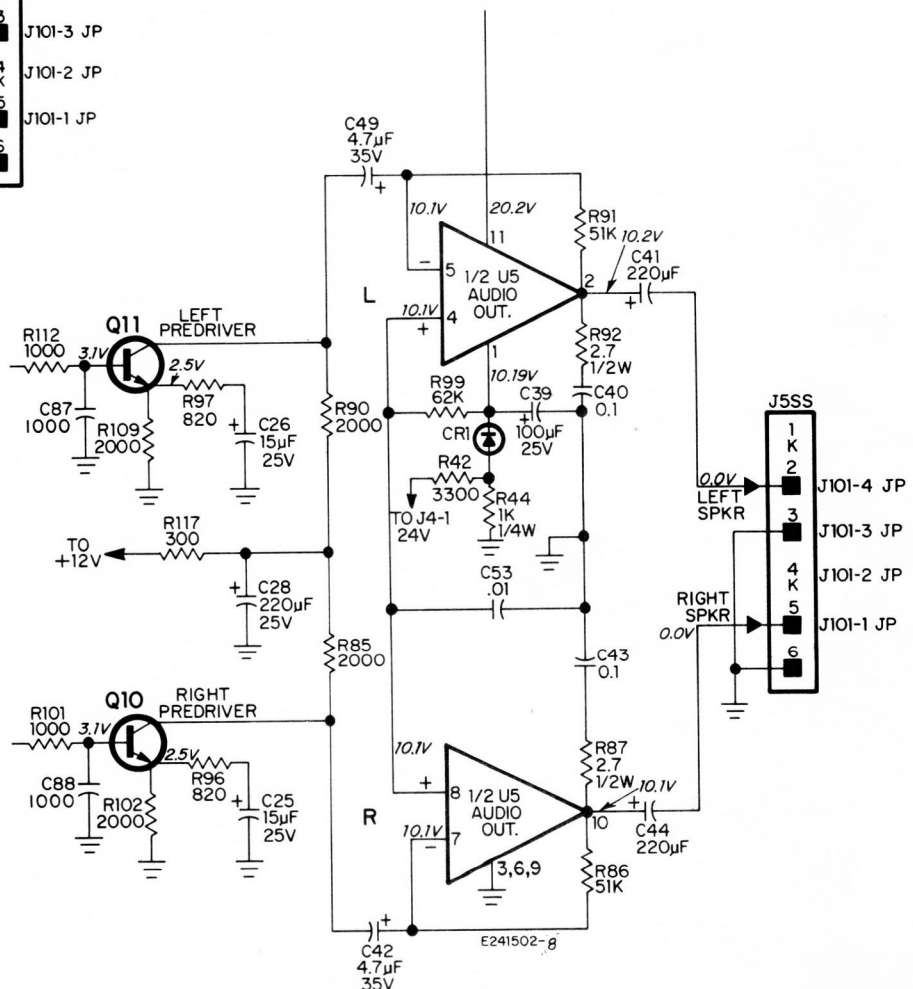


ACROSS THE RIGHT  
TERMINAL (J5)  
60Hz TO AUX 1  
91.  
METER ACROSS THE  
AND ADJUST VOLUME  
S  $\pm 1V$ .  
METER ACROSS BOTH  
MONITOR DIFFERENTIAL  
CONTROL (R6 ON

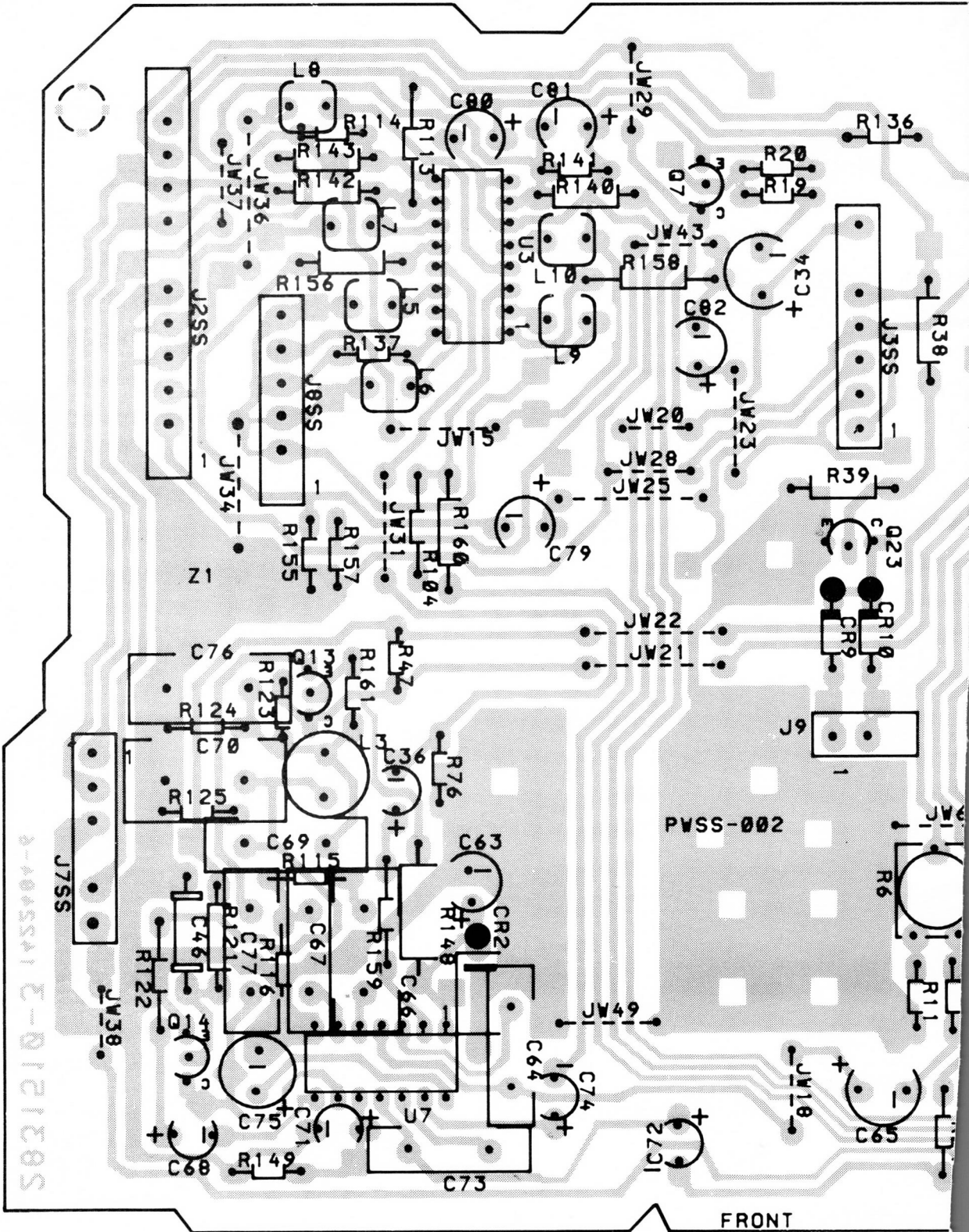


1/8W, 5% EXCEPT WHERE INDICATED.  
ARE IN OHMS K-X 1000.  
E 50V EXCEPT WHERE INDICATED.  
1.0 AND ABOVE ARE IN PF. CAPACITANCE  
ARE IN  $\mu F$  EXCEPT WHERE INDICATED.  
TOLERANCE.  
FOR U2 SAME AS U1 EXCEPT PINS 9 & 15-16  
THAN LEFT IN-OUT.  
ON BETWEEN THIS ASSEMBLY AND OTHERS.  
WIRING DIAGRAM IN RELATED SUPPLEMENT.

## ALTERNATOR LEFT/RIGHT PREDRIVER

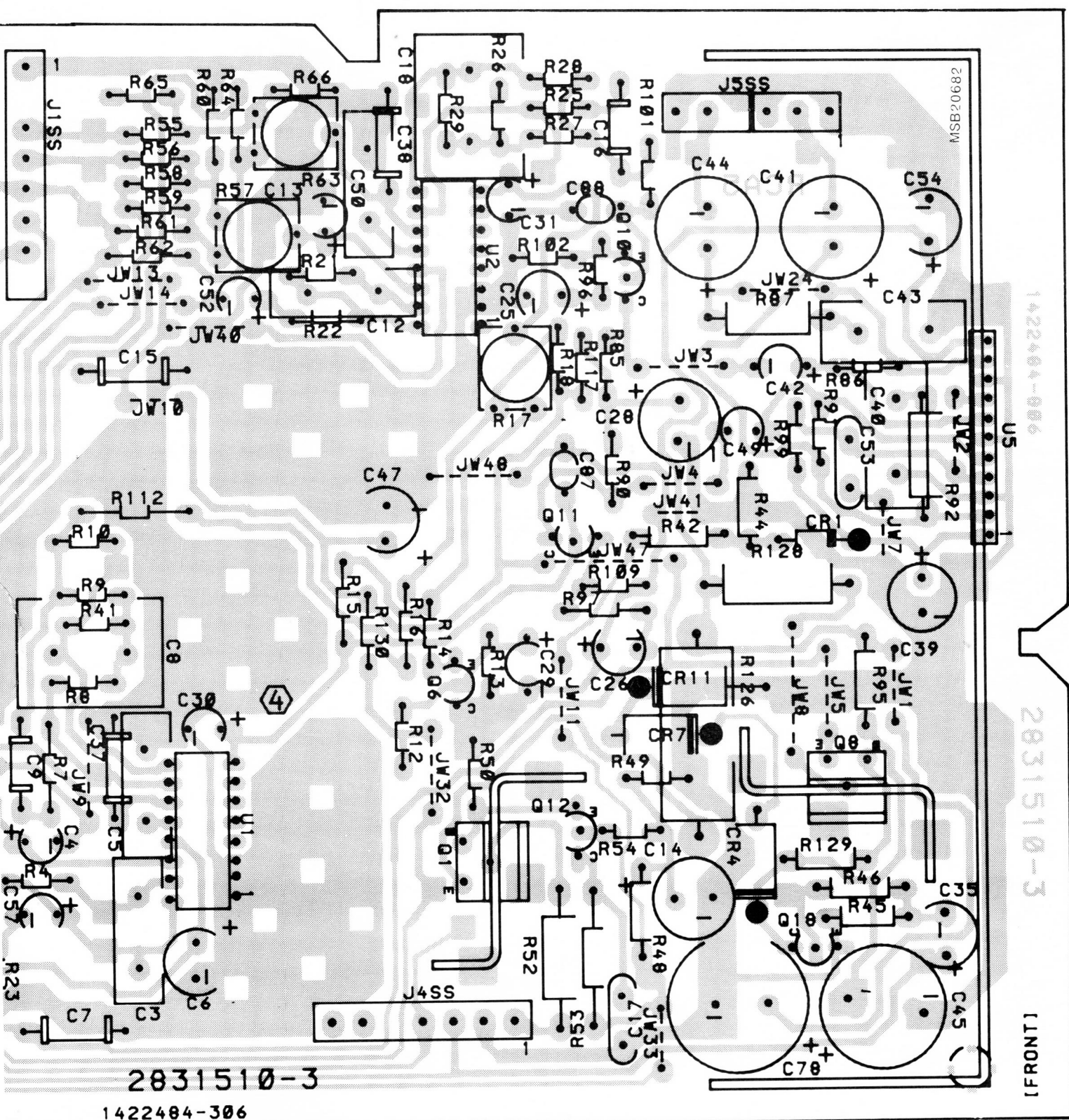


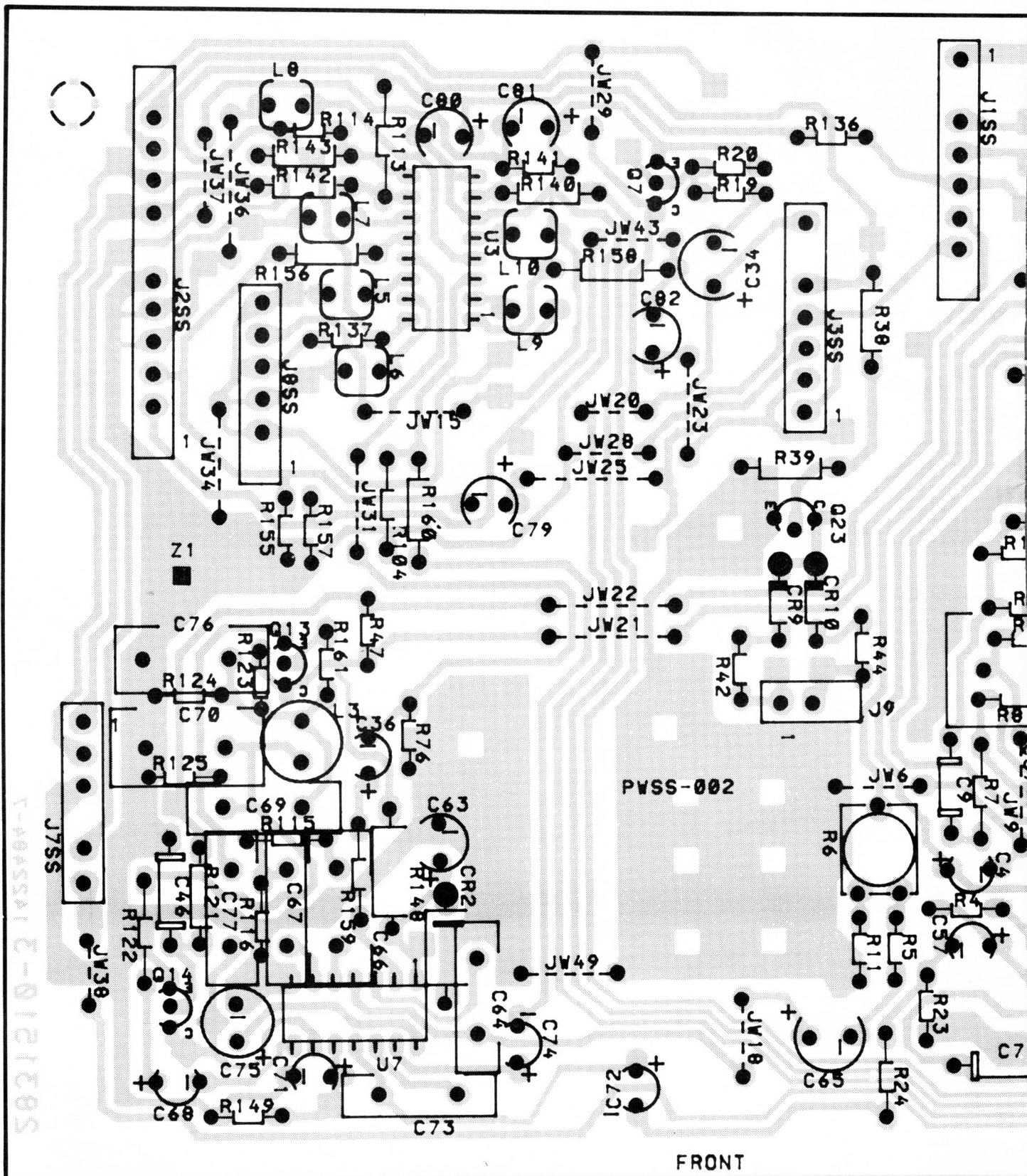






## S002 AUDIO CIRCUIT BOARD







CIRCUIT BOARD

